

# The Crier

October 2022

St. Philip's United Church of Christ

## IN CASE YOU WERE WONDERING ...

The schedule for worship leaders for the month of October is as follows:

|            |  |
|------------|--|
| October 2  | Rev. Dori Hudson<br>Communion Sunday   |
| October 9  | Rev. Donna Kendrick-Philips  |
| October 16 | Rev. Dori Hudson   |
| October 23 | Rev. Dori Hudson   |
| October 30 | Rev. Dori Hudson<br>Fall congregational meeting<br>immediately following service |

Council interviewed a well-qualified candidate for interim pastor. She had a number of interviews with other churches and elected to accept an offer from another church. We will continue to look at potential interims as their profiles become available.

In the meantime, we are grateful to Dori and Donna for their willingness to preach and lead our Sunday services.

We are also thankful for the continuing support of each of you, not only monetarily but with your presence at worship.

Sandy



# St. Philip's Mission Statement

*St. Philip's United Church of Christ is a loving  
Christian community believing in  
Jesus Christ and empowered by the Holy Spirit*



## St. Philip's Vision Statement

**Our  
Vision  
Statement**



We are called to the body of Jesus Christ, with:

Minds to study God's word,  
Mouths to proclaim the Gospel,  
Eyes to see the needs of others,  
Arms to welcome all,

Hearts big enough to share God's love with all God's children.

## **October Birthdays**



Happy Birthday to our members who will be celebrating a birthday in October.

The following words will be heard on the 1st Sunday of each month....

*“Happy Birthday to You!,  
Happy Birthday to You!,  
Happy Birthday Everybody!,  
and God Bless you!”*

|                  |    |
|------------------|----|
| Chuck Knoll      | 6  |
| Richelle Fischer | 9  |
| Harry Jennings   | 12 |
| Claire Vogt      | 12 |
| Samuel Vogt      | 12 |
| Doug Stevenson   | 17 |
| Betty Moore      | 17 |
| Andrea Tukin     | 19 |
| Kevin Mahoney    | 20 |
| Linda Boucher    | 22 |
| Bruce Eason      | 25 |
| Jamie Kotthoff   | 26 |
| Patrick Moran    | 29 |
| Pam Kelly        | 29 |

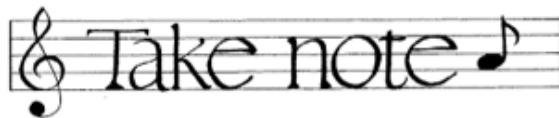
Contact the Church



Office (314) 843-5100  
Email  
admin@stphilipsucc.com



Gail Avery  
Grace Heady  
Pam Kelly  
Marilyn Milne  
Jered Nagle  
Shirley Nottelmann  
Janet Remmers  
Paul Shrout  
Lily Swanson  
Paula Williams



## Choir Rehearsals - Meeting dates October 2 & 16 after Worship

The Choir rehearses the Anthem and Hymns for the upcoming Sunday worship service. New members are always welcome. There is no audition - anyone with a love for music and a desire to sing is invited to join. Rehearsal lasts usually about an hour and we always have fun! Contact Mike Orzel, our Music Director, for more information.

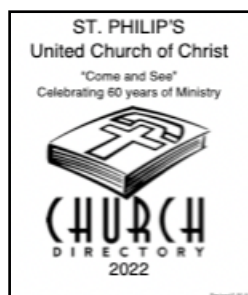
### PRINTER CARTRIDGE RECYCLING

Thank you for bringing your used Canon and HP cartridges to church for recycling. Please continue to put them in the collection box in the entry space.

Also, we no longer recycle plastic lids. Please don't bring them to church but do continue to recycle them appropriately. All the little things, done by a lot of people, do make a difference!

### NEW PHONE DIRECTORIES

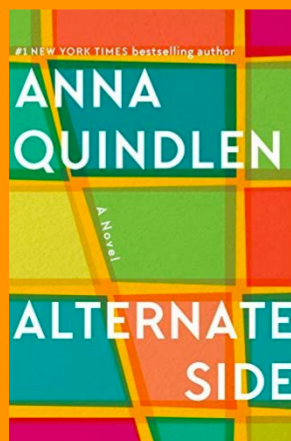
St. Philip's 2022 telephone directories are available on the credenza just outside the sanctuary.



**Sunday  
October 23  
10:15am**

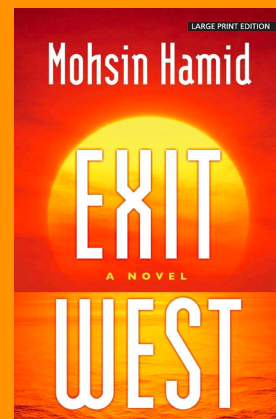


We will meet after Church on October 23 to discuss *Alternative Side*.



Our next selection is *Exit West* by Mohsin Himansu, a love story about the challenges and triumphs of a young couple living in a war-torn country.

Consider joining Book Club. We meet after church, share a pot-luck lunch, and always have a good time.



Available  
October 23

## FALL CONGREGATIONAL MEETING

The 2022 fall congregational meeting is scheduled for **October 30** immediately after church. As you know, the purpose of this meeting is to act upon the recommendations of the Finance Ministry relating to the general fund budget for the coming year. These recommendations, along with the agenda, will be available on the credenza at church two weeks prior to the meeting. If you are unable to come to church, you may call or email Carol in the church office and arrange to receive a copy.

You are encouraged to attend the meeting in person but, if you prefer, you may attend on-line. Either way you will hear the presentations of Carl Philips and Mike Shelton. Those viewing on-line will need to use the comment section on your screen to ask questions and/or to vote.

As always, you are encouraged to listen, ask questions, state your opinions, respect the opinions of others, vote your conscience and then support whatever the majority of those attending approve. Be a part of the decision-making process as we perform this important work of the church.

## The Angel Team

The Angel Team, a part of Outreach Ministry provides help and support to Members of the St. Philip's Family on an as-needed basis. We hope to update our information sheets and will provide blank copies for updating to those attending services.



The form includes emergency medical information and emergency contacts for members. There is also a place for you to indicate how you might be willing to provide help and support to others. For members who do not attend regularly, please contact Barbara Barnes (314-843-4157) and a form will be sent to you.



## LUNCH BUNCH WEDNESDAY, OCTOBER 12

The next Lunch Bunch outing will be held on Wednesday, October 12 at noon at Rich & Charlie's located at 9942 Watson Road. Please see the ORANGE signup sheet on the bulletin board and signup by Sunday, October 9. If you have any questions, contact Dolores Zikes at 314-282-0197.

### ST. PHILIP'S - YOUNG ADULT AND FAMILY FRIENDLY EVENTS

We would like to invite families and/or young adults to several events this fall and winter. Please see what's already on the calendar. More events will be sent out soon. If you have any questions, please contact Andrea Tukin at 314-566-8633 or [andreatukin@gmail.com](mailto:andreatukin@gmail.com)

(See Bulletin email for links for underlined RSVPs and Tickets below)

#### Pumpkin Jamboree @ Eckerts in Millstadt:

Join us Saturday, October 15 from 9 am-12pm for some Fall family fun! [RSVP HERE](#) and buy your tickets [HERE](#).



#### Young Adult Brunch:

Sunday, November 13 at 3 King's Pub in South County. We will go after church (around 10:45am). Childcare is provided as needed. [RSVP HERE](#)



#### Wild Lights @ St. Louis Zoo:

Saturday, December 17. Official details to come, but tentatively planning to meet at 4:30pm @ South Entrance. For more info and to [RSVP CLICK HERE](#). Tickets are not on sale yet, but if you rsvp we will notify you when they go on sale.



### OUTREACH MINISTRY NEWS



We collected supplies for 15 dental packs for Festival of Sharing. Thanks to everyone for their generosity. The budget allocates \$1000 annually for Outreach Ministry to send to a charity of our choice. We have again decided to send these funds to Habitat for Humanity, and the money will be sent this month.

Christmas is right around the corner! We have decided to again participate in the Feed My People "Adopt a Family" program, and to repeat our traditional Cap, Mitten and scarf tree. Details to follow in the November Crier.

### LOGOS FALL SCHEDULE



Hello all,  
Here are our meeting dates through the end of the year. Feel free to invite friends and let me know if you have any questions.

October 5, 12, 19  
November 9, 16, 30  
December 7, 14

Andrea

**TRUNK OR TREAT  
SATURDAY,  
OCTOBER 22  
6:00-7:30pm**

All are welcome to this event in the parking lot at St. Philip's.

Please consider hosting a 'Trunk'. For more information on this event, contact Jacqueline Fechter in the ECC. Thank you.



# TRUNK OR TREAT

**22** OCTOBER  
6:00 PM

Bubble Bus @ 6:30pm

Parents decorating a trunk please arrive by 5:30pm  
Email Ms. Jacqueline, [jfechter@stphilipsucc.com](mailto:jfechter@stphilipsucc.com)  
w/ any questions

## August 2022 General Fund Summary

### Receipts

|                        |                 |           |
|------------------------|-----------------|-----------|
| Sunday Offering        | 10,119.00       |           |
| Grocery cards          | 15.00           |           |
| Interest Income        | 166.94          |           |
| Early Childhood Center | <u>9,500.00</u> |           |
| Total                  |                 | 19,800.94 |

### Expenses

|                                |                  |                  |
|--------------------------------|------------------|------------------|
| Learning Ministry VBS receipts | (275.79)         |                  |
| Financial Ministry             | 1,954.31         |                  |
| Congregational Life Ministry   | 82.00            |                  |
| Church Property Ministry       | 6,322.26         |                  |
| Personnel                      | <u>11,448.86</u> |                  |
| Total                          |                  | <u>19,531.64</u> |

|                   |               |
|-------------------|---------------|
| August Surplus    | 269.30        |
| Previous Balance  | <u>304.94</u> |
| August 31 Balance | 574.24        |
|                   | =====         |

## August Building Fund Summary

|                          |                 |
|--------------------------|-----------------|
| Beginning Balance        | 5,673.48        |
| Building Fund Offering   | 406.00          |
| Capital Improvement Fund | <u>(417.00)</u> |
| August Ending Balance    | 5,662.48        |
|                          | =====           |

## August Improvements Offering Summary

|                       |               |
|-----------------------|---------------|
| Beginning Balance     | 1,095.37      |
| August Offering       | <u>280.00</u> |
| August Ending Balance | 1,375.37      |
|                       | =====         |

| Sunday  | Monday                                  | Tuesday | Wednesday  | Thursday            | Friday | Saturday  |
|---|---|---------|--|---------------------|--------|---|
| <b>OCTOBER</b>  |   |         |  |                     |        |   |
| 2<br>9:30 Sunday Worship<br>In-person & Facebook<br>9:45 Sunday School<br>10:15 Choir Rehearsal             | 3<br>7:00 Church<br>Council Mtg         | 4       | 5<br>5:30-7:00<br>LOGOS  | 6                   | 7      | 8   |
| 9<br>9:30 Sunday Worship<br>In-person & Facebook<br>9:45 Sunday School                                      | 10                                      | 11      | 12<br>noon Lunch<br>Bunch @ Rich<br>& Charlies<br>5:30-7:00<br>LOGOS | 13                  | 14     | 15<br>9:00-noon<br>Family<br>Pumpkin<br>Jamboree<br>@ Eckert's<br>Millstadt |
| 16<br>9:30 Sunday Worship<br>In-person & Facebook<br>9:45 Sunday School<br>10:15 Choir Rehearsal            | 17                                      | 18      | 19<br>5:30-7:00<br>LOGOS   | 20                  | 21     | 22<br>6:00-7:30<br>Trunk 'r'<br>Treat                                       |
| 23<br>9:30 Sunday Worship<br>In-person & Facebook<br>9:45 Sunday School<br>10:15 Book Club                  | 24<br>November<br>CRIER<br>Articles Due | 25      | 26<br>No LOGOS   | 27<br>7:00 Quilters | 28     | 29  |
| 30<br>9:30 Sunday Worship<br>In-person & Facebook<br>9:45 Sunday School<br>10:15 Fall<br>Congregational Mtg | 31                                      |         |  |                     |        |   |