

The Crier

August 2022

St. Philip's United Church of Christ

From the
Pastor's Desk

Two flocks of geese I observed one day seemed like a helpful metaphor. The first was flying low, squawking loud in that complaining tone as if arguing about which should lead and which direction they should take together. The second was high in the sky, organized, quiet, taking turns leading and following their leader in that characteristic 'V' shape which minimizes wind resistance as a team. I suggested the congregation I was serving at the time seek to be like the second group more than the first.

Several years later, watching a similar scene, I realized that each flock goes through both scenarios. The skills of climbing from the ground to above the treetops are important, even if they don't seem so organized and smooth. The high flying 'V' shaped formation occurs only after lots of choosing, leading, following and deciding - taking turns and doing the work together.

It has been my honor to be a part of the team striving to follow God's will at St. Philip's United Church of Christ in St. Louis. I look forward to retirement with joy but also with some sadness. I will miss the people and relationships we worked to form and the accomplishments that came with them.

St. Philip's UCC has great potential. I am confident that members and friends, present and future, have a bright path ahead recovering from the pandemic and making new patterns of following the Lord together.

Thank you for your partnership. I pray you will continue to enjoy being the church in each and all of the heights and depths of the journey.

Sincerely,

Rev. Mike Krewson, Pastor



St. Philip's Mission Statement

*St. Philip's United Church of Christ is a loving
Christian community believing in
Jesus Christ and empowered by the Holy Spirit*



St. Philip's Vision Statement

**Our
Vision
Statement**



We are called to the body of Jesus Christ, with:

Minds to study God's word,
Mouths to proclaim the Gospel,
Eyes to see the needs of others,
Arms to welcome all,

Hearts big enough to share God's love with all God's children.

August Birthdays

Happy Birthday to our members who will be celebrating a birthday in August.

The following words will be heard on the 1st Sunday of each month....

*"Happy Birthday to You!,
Happy Birthday to You!,
Happy Birthday Everybody!,
and God Bless you!"*

| | |
|-----------------|----|
| Jackie Thurmond | 1 |
| Ken Holdener | 1 |
| Terri Karcher | 2 |
| Peggi Werner | 11 |
| Chris Armistead | 15 |
| Megan Comstock | 16 |
| Sloane Slavik | 17 |
| Tammy Knoll | 18 |
| Hilda Leonard | 19 |
| Debbie Hudson | 24 |
| Wally Knoll | 28 |
| Paul Shrout | 28 |
| Joe Williams | 30 |
| Judy York | 31 |



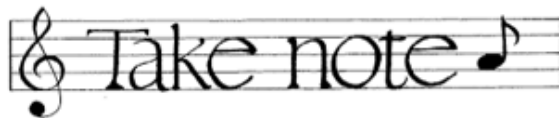
Contact the Pastor



Feel free to call Pastor Mike anytime:
Cell (618) 789-2203
Office (314) 843-5100
or email
pastormike@stphilipsucc.com



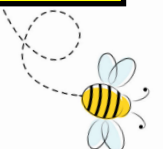
- Gail Avery
- Mary Darr
- Grace Heady
- Pam Kelly
- Marilyn Milne
- Jered Nagle
- Shirley Nottelmann
- Janet Remmers
- Paul Shrout
- Lily Swanson
- The Vinyard Family
- Paula Williams



Choir Rehearsals

Meeting dates - August 7 and 21 after Worship

The Choir rehearses the Anthem and Hymns for the upcoming Sunday worship service. New members are always welcome. There is no audition - anyone with a love for music and a desire to sing is invited to join. Rehearsal lasts usually about an hour and we always have fun! Contact Mike Orzel, our Music Director, for more information.



PRINTER CARTRIDGE RECYCLING

Thank you for bringing your used Canon and HP cartridges to church for recycling. Please continue to put them in the collection box in the entry space.

Also, we no longer recycle plastic lids. Please don't bring them to church but do continue to recycle them appropriately. All the little things, done by a lot of people, do make a difference!

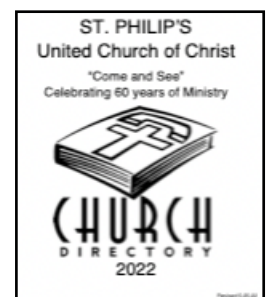
YOUNG(ER) ADULT FELLOWSHIP

On Sunday, August 14, the young(er) adults in the congregation will meet again. We plan to enjoy some food and chat. Childcare will be provided as needed.

If you are interested in joining us or have any questions, please text or call Pastor Mike at 618-789-2203.

NEW PHONE DIRECTORIES

St. Philip's 2022 telephone directories are available on the credenza just outside the sanctuary.



LOGOS Family Night!

Hey friends,

We are looking forward to seeing everyone on **Wednesday, August 10** for LOGOS Family Night! All are welcome!

We will be building our own pizzas for dinner along with having salad and veggies.

For dessert we are doing a DESSERT POTLUCK! Bring any dessert you'd like to share :)

Please let Andrea Tukin know if you plan to attend at andreatukin@gmail.com or (314)566-8633.

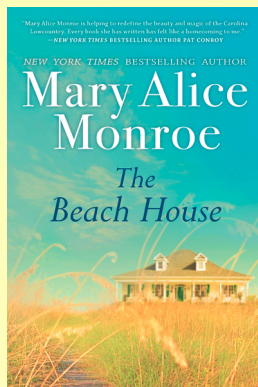
We will meet 5-7pm and are looking forward to seeing you.

God Bless,
Andrea



BOOK CLUB NEWS

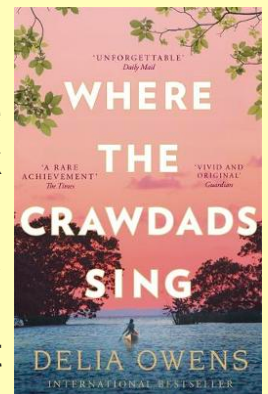
**Sunday
August 21
10:15am**



On August 21, after church, we will discuss *The Baker's Secret*, and share a potluck lunch.

Our next selection is *I Know Where the Crawdads Sing*

by Delia Owens. This best seller has been described as fast paced story with keen and insightful observations of our society. We will meet after church and share a potluck lunch. Having read the book is not required, and there are no tests, only laughter and a good time. Copies of the book are checked out in kit form and are available for pick up at church or home delivery. Consider joining us!



Available
August 21

OUTREACH MINISTRY NEWS

Festival of Sharing is right around the corner. It is a cooperative ecumenical response to hunger, poverty and injustice in Missouri with the goal of supporting projects and programs that help our neighbors experience healthy and full lives. St. Philip's has a long history of participation, with donations of many kinds. In the last two years, because of covid, we asked for cash contributions only.



Outreach Ministry has decided that we would like to resume in-kind donations and we have selected the "Student Dental Pack" Option, which provides items to needy students and their families. This year we are asking for:

- Adult toothbrushes (individually packaged or in two packs)
- Children's toothbrushes individually packaged or in 2 or 4 packs,
- Floride toothpaste (6 oz. or larger)
- Dental floss, any kind or size

For sanitary reasons, it is important the toothbrushes be in the original packages, please do not include large packages of toothbrushes.

We will be collecting **August 21 and 28**, and **September 4 and 11**. A basket will be setup in the Gathering Space to dropoff your donations.

Thanks ahead of time for your generosity.
Outreach Ministry

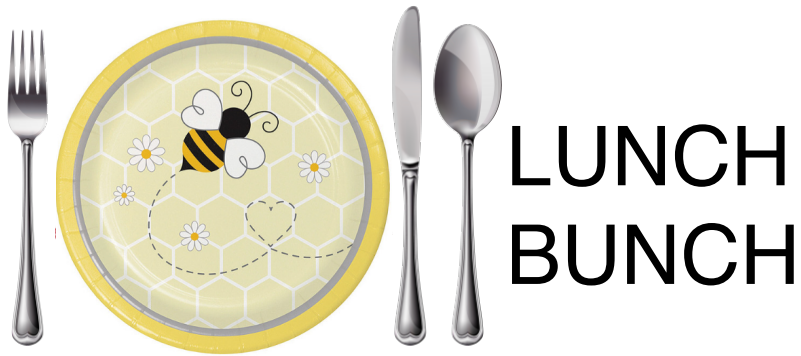


The Angel Team

The Angel Team, a part of Outreach Ministry provides help and support to Members of the St. Philip's Family on an as-needed basis. We hope to update our information sheets and will provide blank copies for updating to those attending services.



The form includes emergency medical information and emergency contacts for members. There is also a place for you to indicate how you might be willing to provide help and support to others. For members who do not attend regularly, please contact Barbara Barnes (314-843-4157) and a form will be sent to you.



Lunch, lunch it is our
favorite meal to munch.
Soup, salad, or BLTs on toast.
we don't know which we like the most.
Sandwiches, pasta, and fries we adore,
plus, friends to laugh with who could ask for more!
If we could choose and have our way,
we'd eat lunch with the group all day!

PLEASE join the Lunch Bunch on:

Wednesday, August 10th at noon

Tucker's Place Restaurant
3939 Union Road 63125

SIGN UP on the St. Philip's bulletin board or RSVP
Mary Dykstra at 314-822-3981 by August 8th.

Hope you will join us so that we can mutter,
"Glad you are here, now pass the butter!"

Pastoral Relations Committee

This committee is an advisory group to the pastor sharing ideas, dreams, hopes, expectations, and concerns of the congregation with the pastor. Confidentiality and trust is essential to the work of this appointed committee.

If you have a concern, hurt, celebration that needs to be shared or discussed with the Pastor, but feel that you cannot approach him with that concern, the committee can raise any concerns that you may have and keep them confidential, if you desire.

We are encouraging open and honest communication between the pastor, church leadership and the congregation so that our shared ministry may be fulfilled. Members of the Committee are:

Pam Henson
Joan Hemingway
Ray Hoffstetter
Debbie Hudson

CONFERENCE CALL

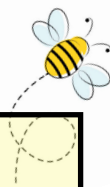
BIBLE STUDY - MONDAYS in August 10:00am

Each week on Monday at 10:00am you are invited to Bible Study and conversation. You may join online (Zoom) or by phone. Call any of the numbers below ahead of time for help in joining.

We will study scriptures for the next Sunday, and check in with each other. You don't have to read ahead.

Pastor Mike Krewson 618-789-2203 or 314-843-5100
Pam Henson 314-520-3663

Please consider joining us to keep in touch with other members.



| Sunday | Monday | Tuesday | Wednesday | Thursday | Friday | Saturday |
|--|---|---------|--|------------------------------------|---|----------|
| AUGUST | 1 10:00 Bible Study 7:00 Church Council Mtg | 2 | 3 | 4 | 5 5:30 Spiritual Life Meeting | 6 |
| 7 9:30 Sunday Worship In-person & Facebook 9:45 Sunday School In-person 10:15 Choir Rehearsal | 8 10:00 Bible Study 7:00 Church Council Mtg | 9 | 10 12:00 Lunch Bunch @ Tucker's 5:00-7:00 LOGOS Family Night | 11 | 12 | 13 |
| 14 9:30 Sunday Worship In-person & Facebook 9:45 Sunday School In-person 10:15 Younger Adult Fellowship | 15 10:00 Bible Study | 16 | 17 | 18 | 19 | 20 |
| 21 9:30 Sunday Worship In-person & Facebook 9:45 Sunday School In-person 10:15 Choir Rehearsal 10:15 Book Club | 22 10:00 Bible Study 4:30 ECC Board Meeting | 23 | 24 | 25 September CRIER Articles Due | 26 | 27 |
| 28 9:30 Sunday Worship In-person & Facebook 9:45 Sunday School In-person | 29 10:00 Bible Study | 30 | 31 | | | |