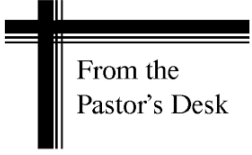


# The Crier

February 2022

St. Philip's United Church of Christ



From the  
Pastor's Desk

This moment in history seems so dark to me. Days are short and nights are long. The pandemic is at an all time high. Not meeting in person is hurting churches, schools, and most every other organization. When will it all end? When will goodness be on the rise instead? How can we remain faithful in the present moment and retain hope for the future?

Jesus said: **"He is light."** (John 8:12).

And that we should:

**"let [our] light shine before others".**

The month of February begins with a day that is 10:16:28 hrs long and ends with a day that is 11:18:29 hrs long! More than an hour of additional sunlight per day in only 28 days! Our Northern hemisphere is slowly enjoying more sunlight each day (over 2 minutes per day more). The light is returning and we need to keep that in mind and not lose heart.

When temperatures are warmer and more light from the sun comes to us, may our faithfulness increase as well. Between now and then, let us encourage each other as best we know how.

Pastor Mike Krewson



# St. Philip's Mission Statement

*St. Philip's United Church of Christ is a loving  
Christian community believing in  
Jesus Christ and empowered by the Holy Spirit*



## St. Philip's Vision Statement

**Our  
Vision  
Statement**

We are called to the body of Jesus Christ, with:  
Minds to study God's word,  
Mouths to proclaim the Gospel,  
Eyes to see the needs of others,  
Arms to welcome all,  
Hearts big enough to share God's love with all God's children.

## **February Birthdays**

Happy Birthday to our members who will be celebrating a birthday in February.

The following words will be heard on the 1st Sunday of each month....

*"Happy Birthday to You!,  
Happy Birthday to You!,  
Happy Birthday Everybody!,  
and God Bless you!"*

JoAnn Leber	1	Harrison Fischer	18
Rachel Fischer	3	Gavin Armistead	20
Lily Swanson	3	Cara Holdener	21
Elizabeth Vogt	9	Virginia Hladnick	23
Heather Harvey	12	Emily Mikusch	27
Dustin Knoll	14	Joan Hemingway	28
Kathy Vogt	17	Dave Schiele	28
Wes Cummings	18		



Contact the Pastor



Feel free to call Pastor Mike anytime:

Cell (618) 789-2203

Office (314) 843-5100

or email

[pastormike@stphilipsucc.com](mailto:pastormike@stphilipsucc.com)



Judy Hickman

Russ Hickman

Deb Hudson

Harry Jennings

Pam Kelly

Brian Malin

Marilyn Milne

Jered Nagle

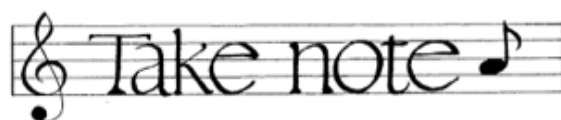
Janet Remmers

Wendy Remmers

Paul Shrout

Dottie Vinyard

Paula Williams



## Choir Rehearsals

### We will notify you when Rehearsals resume

The Choir rehearses the Anthem and Hymns for the upcoming Sunday worship service, however, are not meeting in person at this time. New members are always welcome. There is no audition – anyone with a love for music and a desire to sing is invited to join. Rehearsal lasts usually about an hour and we always have fun! Contact Mike Orzel, our Music Director, for more information.

## LITURGISTS (in-person worship)

The Liturgist reads the scriptures during worship. We will provide the reader with the scriptures via email or USPS mail several days prior to the service allowing you time to become comfortable in reading to the congregation.



If you are interested in serving as a liturgist, see the **GOLD** signup sheet on the bulletin board, or let Tammy, the Office, or Pastor know and indicate the method of receiving the readings.

Thank you for your consideration,

Tammy Knoll



## IN CASE OF SNOW...

If worship services are canceled due to inclement weather, please watch for the announcement on Channel 2 or 11. We will be listed as:

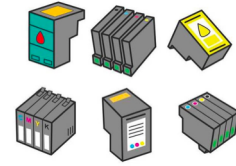
### St. Philip's UCC

As a courtesy, please call anyone you know who might need this information.

Cancellations will also be posted on Facebook.



**Get Ready!**  
**Get Set!**  
**Save...**



your used computer inkjet cartridges. Bring them to church and they'll be converted to cash for St. Philip's.

At the present time only Hewlett Packard and Canon cartridges are being accepted and they must be original inkjets – not generic, refilled, or damaged. What is accepted may change from time to time but these are the current requirements.

So please bring only Hewlett Packard or Canon as outlined above. It will keep the cartridges out of the landfill and earn cash for St. Philip's as well.

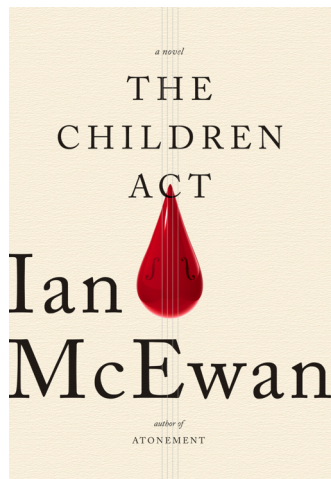
Look for the marked box in the Gathering Space.

**Sunday**  
**February 20**  
**10:15am**

## BOOK CLUB



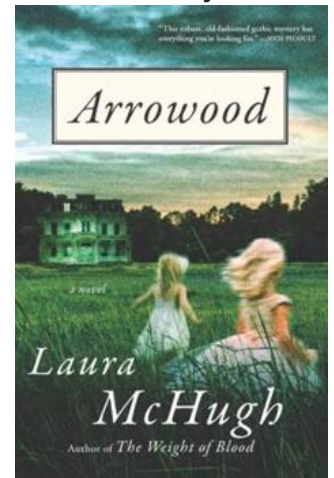
Copies will be available at church on February 20



We will meet on February 20 to discuss *The Children Act*. Depending on Covid numbers, we may share a potluck lunch, or just discuss the book.

Our next selection is *Arrowood* by Laura McHugh. It is a Psychological suspense mystery.

Consider joining Book Club. We always have a good time.



## CONFERENCE CALL

**BIBLE STUDY - MONDAYS in February 10:00am**

Each week on Monday at 10:00am you are invited to Bible Study and conversation. You may join online (Zoom) or by phone. Call any of the numbers below ahead of time for help in joining.

We will study scriptures for the next Sunday, and check in with each other. You don't have to read ahead.

Pastor Mike Krewson 618-789-2203 or 314-843-5100

Pam Henson 314-520-3663

Please consider joining us to keep in touch with other members.

## December 2021 General Fund Summary

### Receipts

Weekly Offering	13,802.00	
Grocery Cards	45.00	
Panera Fund Raiser	119.70	
Early Childhood Center	<u>9,500.00</u>	
Total		23,466.70

### Expenses

Spiritual Life Ministry	300.00	
Financial Ministry	1,247.88	
Outreach Ministry	250.00	
Church Property Ministry	5,810.69	
Personnel	<u>11,254.19</u>	
Total		<u>18,862.76</u>

December Surplus	4,603.94
Previous Balance	<u>1,891.30</u>
December 31 Balance	6,495.24
	=====

## December Building Fund Summary

Beginning Balance	5,144.96
Building Fund Offering	539.50
Capital Improvement Fund	<u>(417.00)</u>
December Ending Balance	5,267.46
	=====

## December Improvements Offering Summary

Beginning Balance	2,249.37
December Improvement Expenses	(211.00)
December Offering	<u>309.00</u>
December Ending Balance	2,347.37
	=====

Sunday	Monday	Tuesday	Wednesday	Thursday	Friday	Saturday
		1	2	3	4	5
6 9:30 Sunday Worship In-person & Facebook 9:45 Sunday School In-person	7 10:00 Discussion Bible Study Conference Call/Zoom Mtg 7:00 Church Council Meeting	8	9	10	11	12
13 9:30 Sunday Worship In-person & Facebook 9:45 Sunday School In-person	14 10:00 Discussion Bible Study Conference Call/Zoom Mtg	15	16	17	18	19
20 9:30 Sunday Worship In-person & Facebook 9:45 Sunday School In-person 10:15 Book Club Meeting	21 10:00 Discussion Bible Study Conference Call/Zoom Mtg	22	23 March CRIER Articles Due	24	25	26
27 9:30 Sunday Worship In-person & Facebook 9:45 Sunday School In-person	28 10:00 Discussion Bible Study Conference Call/Zoom Mtg	FEBRUARY				